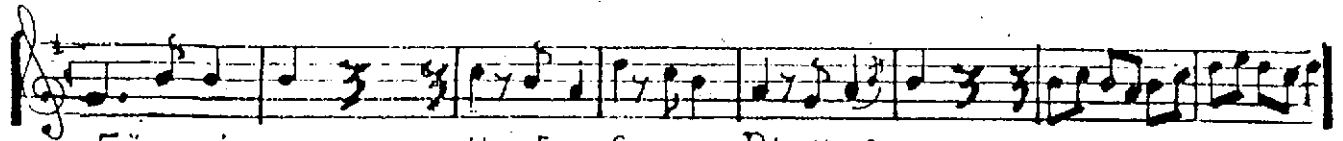
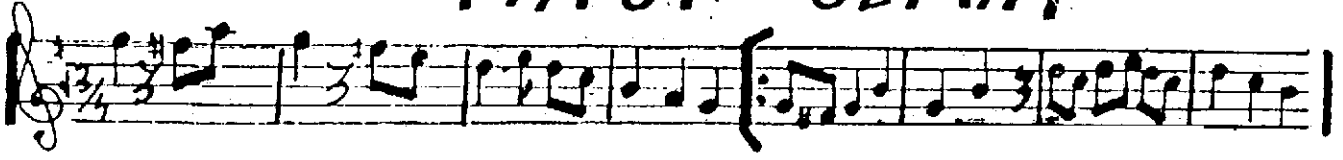


BÖZLERİNDE HER BELE, <sup>BÜFTE ENBİN ÇIR</sup>  
CANLANAN BİR HAYÂLE <sup>BESTE GÜNDOĞDU</sup>  
BAŞT SEMAİ <sup>DOĞAN</sup> (1)

♩ = 120



BÖZLERİN DE HER BELE, CANLANAN BİR HAYÂ LE S A Z



YÜREKTEN HAYKIRIP TA, DUR, DEDİMİ DUDAĞIN, DUR, DEDİMİ DUDAĞIN



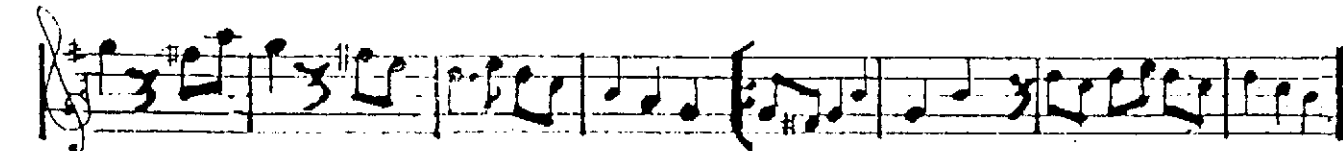
DUR, DEDİMİ DUDAĞIN S A Z YAŞAMAKTAN BIRIP TA, U SANDIĞIN BİR AN DA



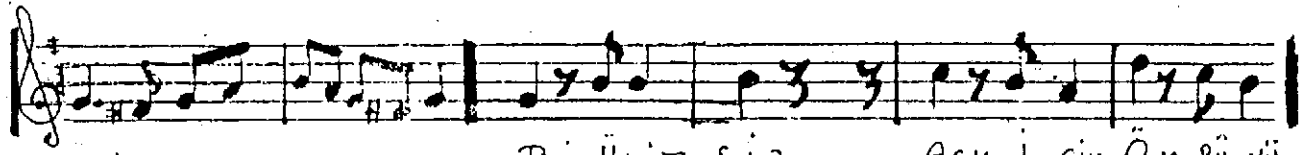
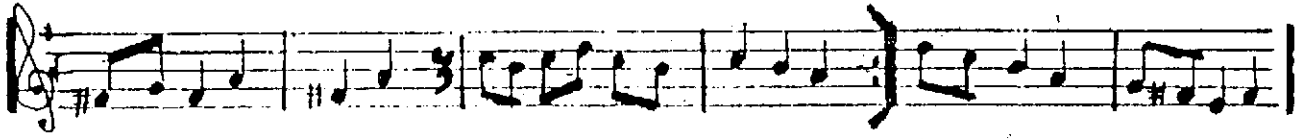
FELEĞİ ÇAĞIRIP TA, DUR, DEDİMİ DUDAĞIN FELEĞİ ÇAĞIRIP TA YUR, DEDİMİ DUDAĞIN



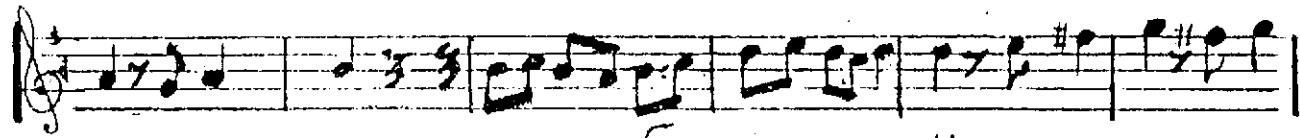
FELEĞİ ÇAĞIRIP TA YUR, DEDİMİ DUDAĞIN, FELEĞİ ÇAĞIRIP TA YUR, DEDİMİ DUDAĞIN.



(2)



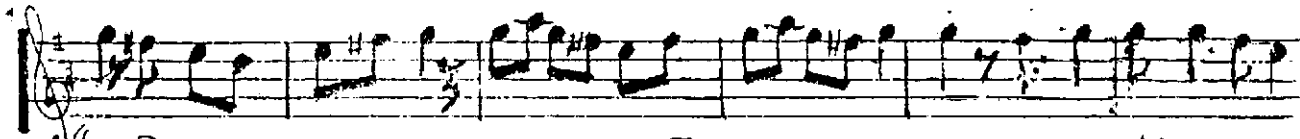
BİRÜMİT SİZ AŞK İ ÇİN ÖM RÜ NÜ



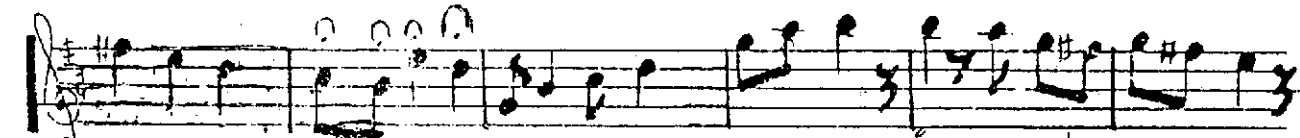
ZEHRE DER KEN S A Z KAL BI NE TAŞ BAS IP,



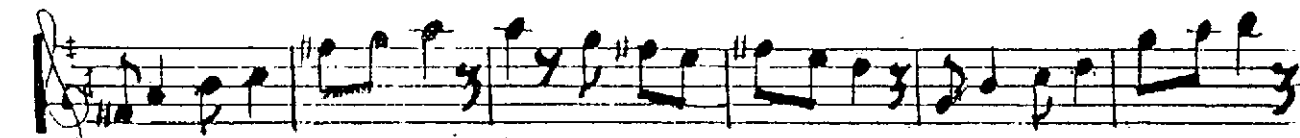
TA "SIR, DEDİMİ DUDAĞIN "SIR, DEDİMİ DUDAĞIN



"SIR, DEDİMİ DUDAĞIN S A Z HER BECE MASANDAKİ



MEYLERLE A VUNUKENE LİNDE Kİ KADE Hİ "KIR, DEDİMİ DUDAĞIN



E LİNDE Kİ KADE Hİ "KIR, DEDİMİ DUDAĞIN E LİNDE Kİ KADE Hİ



"KIR, DEDİMİ DUDAĞIN E LİNDE Kİ KADE Hİ "KIR, DEDİMİ DUDAĞIN

-SON-

GÜNDOĞDU DOĞAN